

# Graduate Teacher Induction Program: what can I expect?



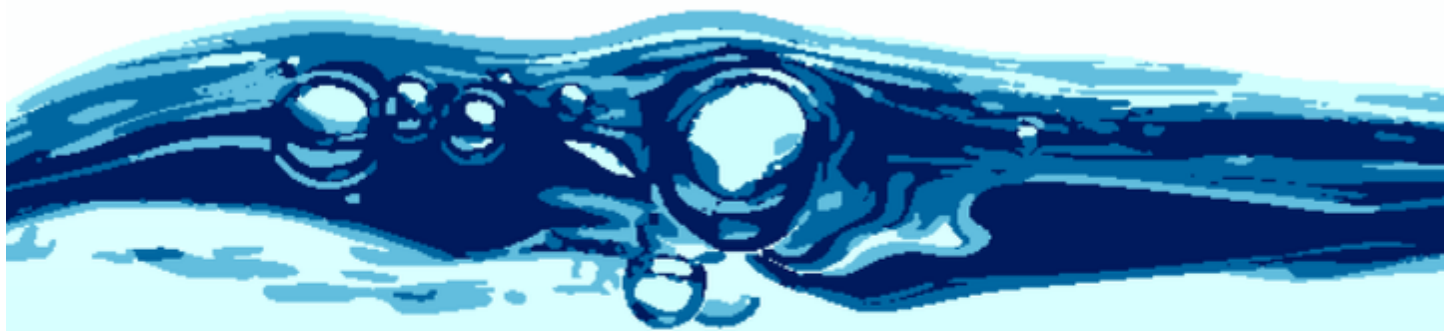
By Chloe Hosking  
Growth Team coordinator

— Teaching tip —

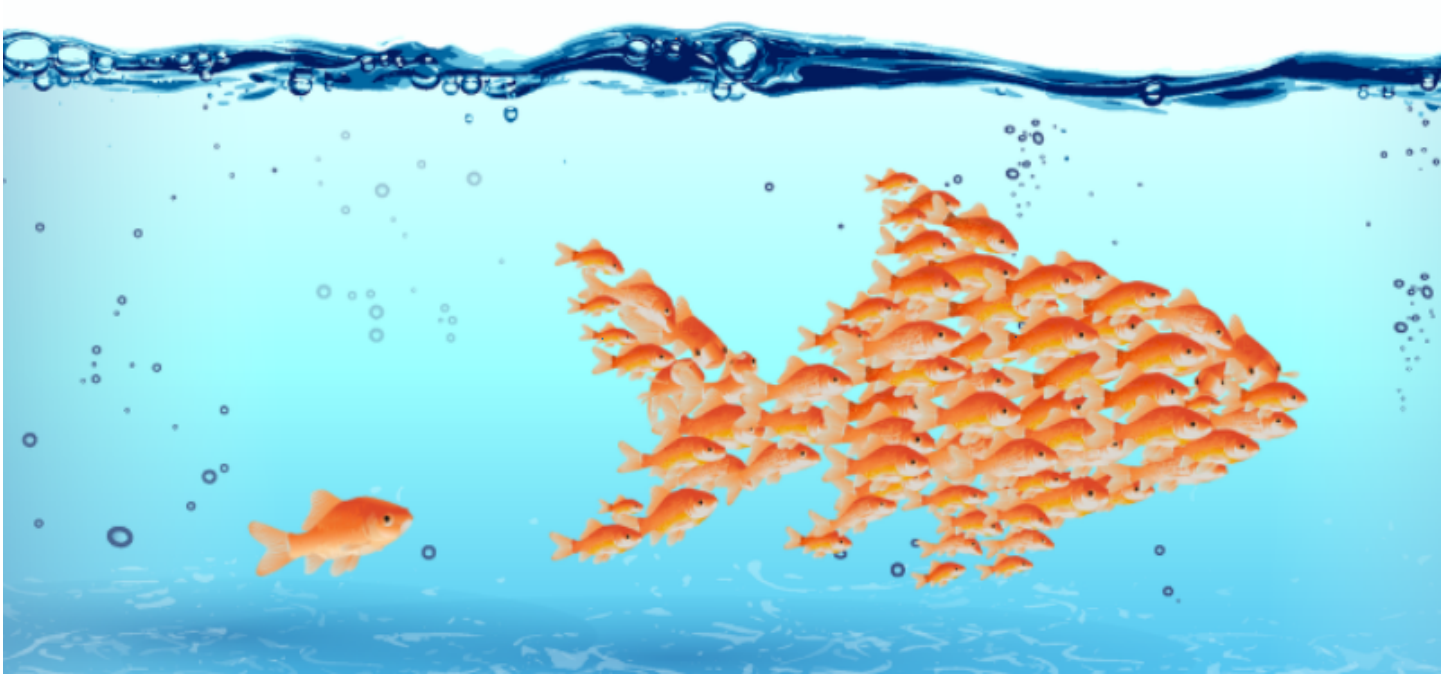
## **Allocate group roles**

During collaborative learning, assign specific roles to students. For example, timekeeper, note-taker, leader and presenter. This ensures every student is accountable for contributing and helps reduce off-task





**Communicate  
with parents**



In the previous edition, we outlined the funded entitlements available to graduate teachers, including the start-up allowance, additional non-contact time, curriculum materials allowance and travel contingency support. Alongside these entitlements, graduate teachers are required to participate in the Graduate Teacher Induction Program, which includes four graduate modules. You may also choose to opt in to the In-Class Coaching Program (ICCP).

### **Graduate Modules**

During your first 30 months of teaching with the Department of Education (DoE), you are required to complete four graduate modules. These modules are designed to support your transition from university study to classroom practice.

Completion of the modules is a DoE requirement. They are not a requirement of the Teacher Registration Board of Western Australia and you do not need to complete them to move from Provisional to Full Registration.

Each module has a specific focus:

- **Modules 1 and 2:** Professional standards for effective classroom practice.
- **Module 3:** Assessment.
- **Module 4:** De-escalation and positive handling.

Modules must generally be completed in order. The exception is Module 4, which can be completed at any time within your first 30 months of teaching.

Schools receive funding to cover your relief while you attend graduate modules. You should speak with your principal to arrange release time. If you choose to complete a module outside of work hours or during school holidays, you are entitled to Paid Time Off in Lieu. These arrangements should be confirmed before enrolling.

If you need to travel to attend a module, including within the metro area, you can access the travel contingency allowance. Speak with your Manager of Corporate Services to confirm how to claim this support.


To find module dates in your area, log in to IKON and access the Professional Learning Information System. Search for “graduate teaching module” to view upcoming sessions in metropolitan and regional locations.

### **In-Class Coaching Program**

Graduate teachers can also choose to participate in the ICCP. This program provides confidential, non-judgmental support focused on professional growth and reflection.

Coaches are experienced teachers who support graduates through professional conversations, classroom observations, goal setting, data collection for full registration, reflective practice and job applications. Participation is optional and designed to complement your early career development.

The program also gives participants access to additional online professional learning to support transitions to full registration.



Authorised by Sally Dennis, General Secretary, The State School Teachers' Union of W.A.  
ABN 54 478 094 635 © 2026