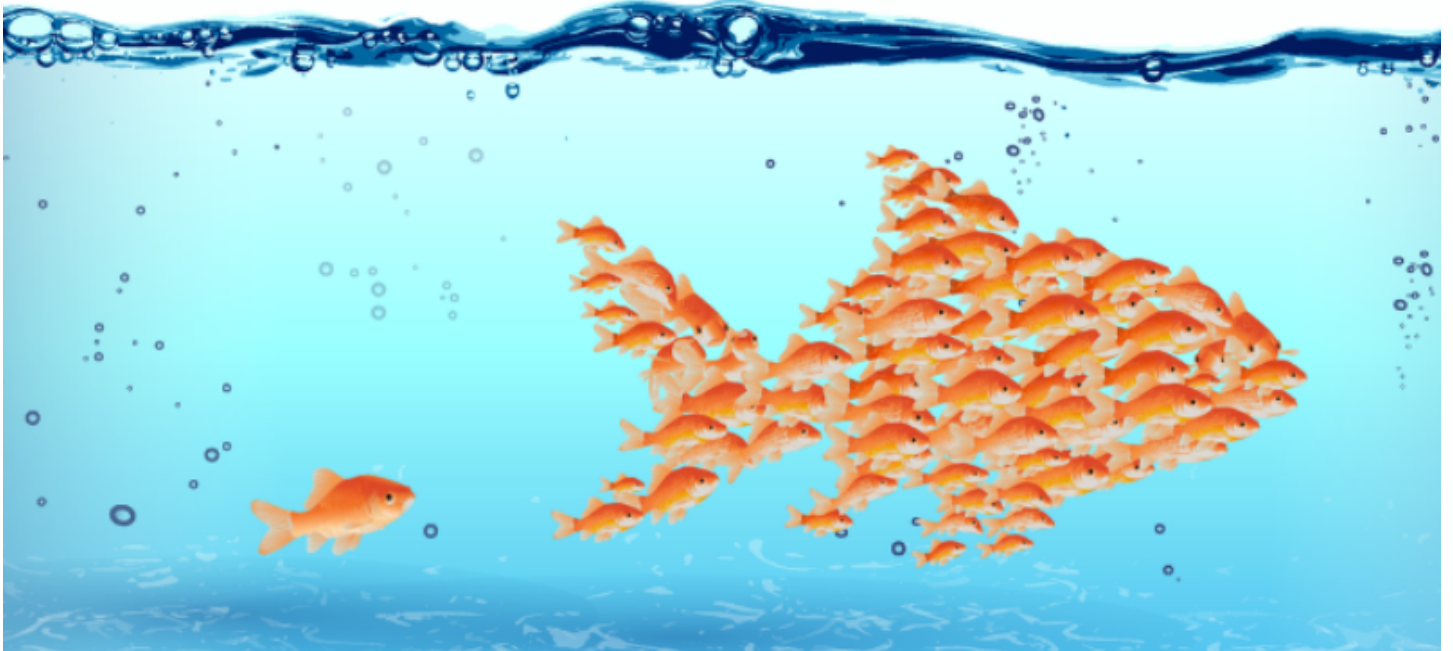


Make sure that we've got you covered



As a new educator member, it is important that you know your union is here to support you with advice, protection and advocacy. To make sure you're getting the most from your union, now is the time to check that your membership matches your current work or study situation.

There are different membership types for those studying to become a teacher, working as a relief teacher, part-time or full-time. If you're on limited registration, you can also access our discounted untrained teacher membership.

If you're studying to be a teacher, student membership is your best option. It includes advice and support from Member Assist and the Growth Team, exclusive discounts and promotions, access to the New Educator Network, professional development and training opportunities, and a subscription to Western Teacher magazine. You'll also be covered during unpaid professional experience, so you're supported before you even graduate.

Once you begin teaching, your student membership does not cover you and upgrading to financial membership ensures you have access to legal and industrial support, workers' compensation advice, free or discounted legal services and journey accident cover. Just like health or home insurance, you need to be covered before an issue arises.

Financial membership also lets you take part in the SSTUWA's democratic processes, such as shaping agreements.

If you're working as a relief teacher, even while finishing your degree, you'll need a casual membership. This special flat rate of \$11.95 per fortnight (at time of publishing) gives you full coverage, with the flexibility to work as much or as little relief as you like. Once you get a contract, just let us know so we can update your membership type.

For those working on a full- or part-time contract with a Limited Authority to Teach, or as a Teach for Australia associate, there's a special untrained teacher membership. Once you've graduated and started as a fully qualified teacher, you can transition to full membership based on your work fraction and salary level to ensure you are fully covered.

Our subscription rates are flexible and can be adjusted as your work changes. Just keep us updated with your details so we can make sure you're on the right membership and have the best level of coverage.

To check your coverage or update your membership, contact the Membership Team or Growth Team on (08) 9210 6000, or

email membership@sstuwa.org.au or neweducator@sstuwa.org.au

You can also jump online and complete the form found at sstuwa.org.au/contact and select “update membership details” from the drop-down menu.

Not a member yet? Now’s the perfect time to join – click [here](#).



By Ellie Aldred
Growth Team officer

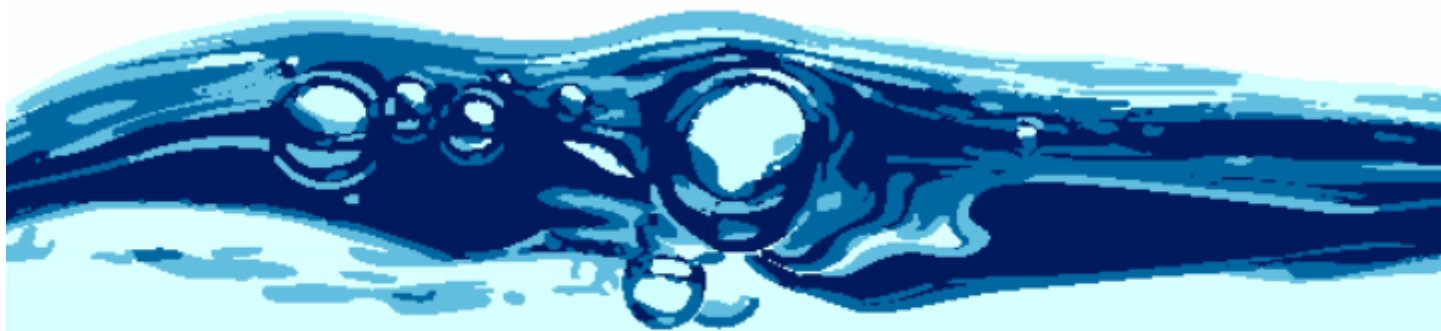
— Teaching tip —

Take time for yourself

As the end of term approaches, it's easy for marking and workload to build up and for stress to creep in. It's a good time to pause and make sure you're taking care of yourself.

Schedule things you enjoy such as dinner with friends, a walk, a massage – whatever helps you recharge. Making plans after work can help you leave on time and unwind properly. Don't forget, our member benefits hub offers great deals on leisure and wellbeing activities.

It's also a great idea to set clear work boundaries. Consider using an automatic email reply that outlines your workdays and hours and removing access to work



W

.....

Work within

